



The Internet Hunt Project - Gather sites and make the web page

Directions:

Step 1. Decide on your questions or the subject of the question like geography, government culture, and so on.

An example of a weather question might be "What kind of weather can we expect when visiting Egypt in November? Do the online research. Document the web address - url - needed to locate the answer. **Copy .. Paste** the correct web address for finding the answer. Avoid typing long web addresses. It is easy to make a mistake. Your hunt links won't work if there are typing errors in the address.

Save each person's research wp document in a common folder on the computer.

Step 2. Make a word processing document with all the questions.

Collect each person's questions, urls and answers into one word processing file.

Copy .. Paste the correct web address for finding the answer. Avoid typing long web addresses. It is easy to make a mistake. Your hunt links won't work if there are typing errors in the address.

Answers must be in complete sentences.

Be sure to save after completing each question set. The hunt must have a title and each group member's name at the top.

Print this document. It is part of your project grade. Be sure you have edited the final copy.

Step 3. Convert it to a web page.

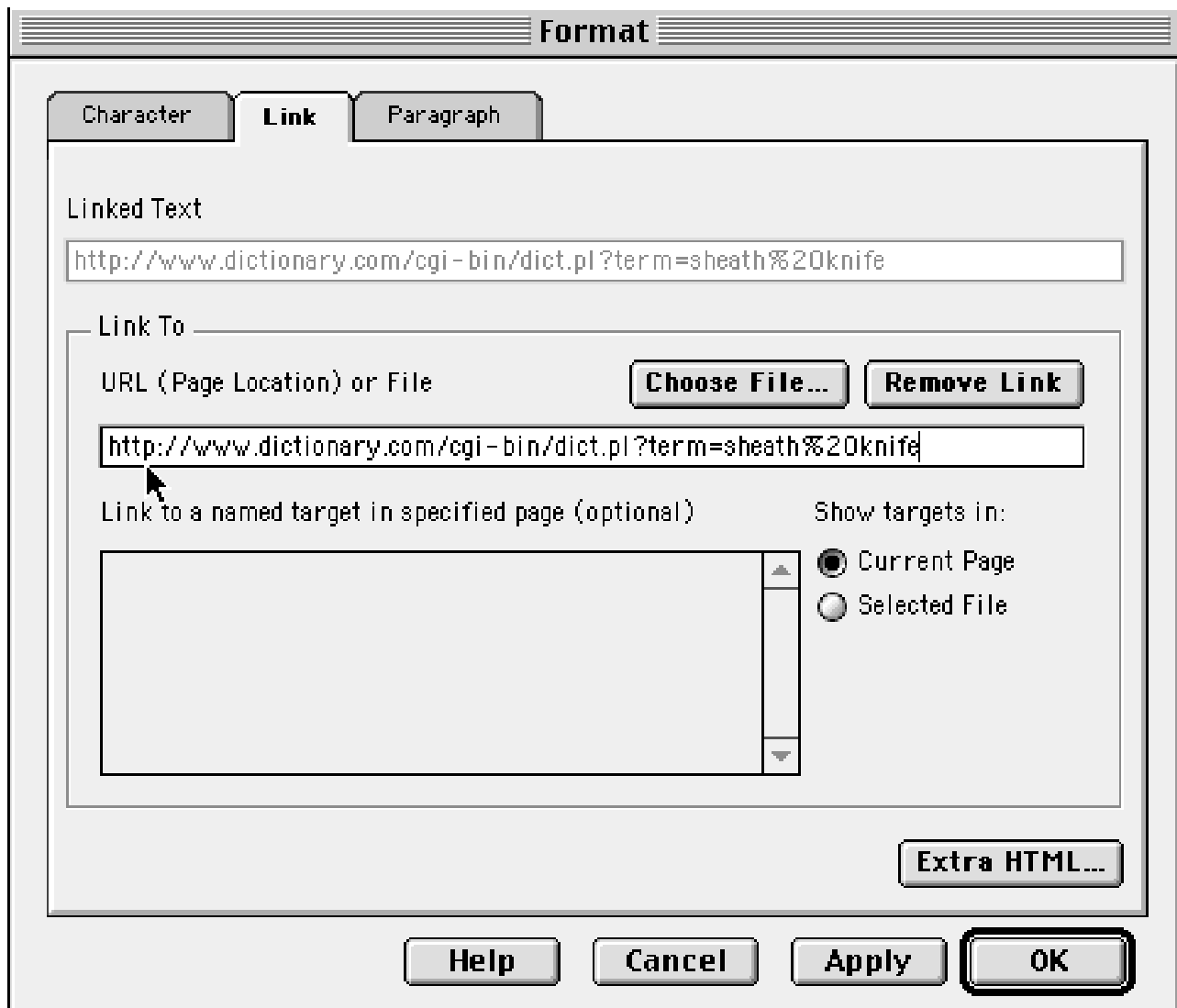
1. Select all the text in the wp document file.
2. Copy it.
3. Launch Netscape
4. Open Composer. Go Communicator ... Composer.
5. Paste in the blank web page. Your hunt should now appear as plain text.
6. Delete all the page number references and the answers from the web page.
7. Save - title "first four letters of the country's name.html" fran.html or ital.html
8. Begin linking.

To Link

1. Highlight the web address for the question.
2. Copy it.
3. Click the link (chain) symbol in the menu at the top of Composer.



4. Paste the address in the Link to URL box.



5. Click OK to set the linking.
6. Save after making each link.

4. Add directions for the user under the title of the hunt on the web page.

Directions:

5. Copyright your work at the bottom of the web page by entering "Copyright" the date, Each group member's initials. "All rights reserved."

6. Proof the links:

Use Netscape to double check the links on the web page.

With Netscape open Go File .. Open file

Choose your web page.

Click on the links to go to each web site. Use the Back button to return to your web page.

* A common error is to copy a space after the last character in the web address. If the link does not work, make sure it ends right after the last character.

Upon completion your group will submit:

A web page containing all the hunt questions with the links working.

A word processing document with each question, the url and the answer.

Your research assignments (worksheet of facts to find)